

Risk Assessment – Didi Car Track

Hazard Area	Risk	Existing Controls	Likelihood 1 - 5	Severity 1 - 5	Risk Score L x S	Further Action to take
Didi Car Track	Over enthusiastic participants.	Responsible person supervising at all times. Riding from side to side is NOT PERMITTED UNDER ANY CIRCUMSTANCES or climbing on the inflatable walls.	3	2	6	In the event of large numbers of participants trained operators can be supplied with the inflatable to aid with large numbers / big crowds. If dry hired, educate the hiree to follow the full terms and conditions as well as the terms of hire. Reinforce the policies shown in these documents. Show safety cartoons if required to help educate the hiree.
Didi Car Track	Adverse weather conditions – RAIN.	The equipment is not to be switched off in heavy rain, no users are allowed on the equipment whilst the entrance / exit or ride area is bubbling or wet. Ensure that the hiree is aware of the wet weather policy upon arrival and correct supervision is maintained at all times.	2	5	10	Reinforce policy by showing the terms of hire and or health and safety page located on the SoSoft Play website.
Didi Car Track	Danger of unnecessary injury.	Ensure that no one with a history of back / neck problems, heart conditions, anyone who is feeling unwell, is suffering the effects of alcohol or drugs use do NOT use any equipment at any time. This also includes pregnant women.	2	5	10	Educate the hiree to follow the full terms and conditions as well as the terms of hire. Reinforce the policies shown in these documents. Show safety cartoons if required to help educate the hiree.
Didi Car Track	Overloading or Tipping over.	No user weighing over 100kg or 15 stone is permitted to use the equipment at any time. Please follow the manufactures guidance on the front of the inflatable / ride on toys.	1	5	5	Ensure that the hiree is aware of the overloading policy upon arrival and correct supervision is maintained at all times.
Didi Car Track	Larger participants colliding with smaller participants.	Responsible person supervising at all times ensuring participants are placed in weight / height categories or in similar size categories for safe use. Please follow the manufactures guidance on the front of the inflatable / ride on toys is followed.	1	1	1	Educate the hiree to follow the full terms and conditions as well as the terms of hire. Reinforce the policies shown in these documents. Show safety cartoons if required to help educate the hiree.
Didi Car Track	Adverse weather conditions – WIND.	Inflatables / ride on toys are not permitted to be used or inflated in strong winds (over 24 mph) including gusts. Windy conditions can be deemed a health and safety risk. All Staff are trained to know this and carry aerometers to check wind speeds regularly.	Dependant on weather	Dependant on weather	Dependant on weather	Reinforce policy by showing the terms of hire and or health and safety page located on the SoSoft Play website. If winds are expected after set up at any point, leave aerometer and train hiree on when and how to check if the wind conditions are safe.

Didi Car Track	Danger of injury from hard surfaces.	The inflatable tack must never be used unless the inflatable track is fully inflated and rigid as this can lead to serious injury. Set up must follow the BS EN 14960:2006 guidelines for correct space around a castle.	2	4	8	Educate the hiree to ensure mats stay located in the erected position through the hire and no hard objects are placed in accordance to the BS EN 14960:2006 guidelines for correct space around a castle during the hire period.
Didi Car Track	Injury through lack of supervision.	Fully train hiree of correct supervision policy. Its Recommended a fully trained operator must be present at all times, in the event that the operator is not in view Do Not enter the inflatable in any circumstances.	2	5	10	Show the safety cartoons located on the terms and conditions page of the SoSoft Play website to help control and better organise the hiree's supervision techniques.
Didi Car Track	Tripping over anchorage points, spare equipment, electrical cables.	Anchor points will be used as per manufacturers / BS EN 14960:2006 instructions and spare equipment stowed away safely. Where possible electrical cable should not cross any public pathway or be placed out of reach of users / the public around the equipment.	1	2	2	In the event of large numbers of participants attending or large events, additional safety fencing is erected, electrical cables will be erected overhead or covered and free from walk ways.
Didi Car Track	Injury through incorrect positioning.	The inflatable track will be set up to follow the BS EN 14960:2006 guidelines for correct space around a castle.	1	5	5	Educate the hiree to not move or try to reposition the inflatable under any circumstances. Reinforce the policy shown in the terms of hire.
Didi Car Track	Petrol Blower, Generator, Risk of fire.	Blowers/generators must filled with fuel before delivery. If fuel will need to be added throughout the day, full training to the hiree will be given. Units are fire retardant if there was an issue.	1	5	5	All spare fuel is stored in suitable marked container, and in a safe location, units switched off during re fuelling, ensuring all excess fuel is removed from the area and devices are dry and free from fuel before re starting.
Didi Car Track	Choking.	No food, drinks, chewing gum, balloons, silly string or alike to be allowed on or near the Inflatable tack.	2	5	10	Educate the hiree to follow the full terms and conditions as well as the terms of hire. Reinforce the policies shown in these documents. Show safety cartoons if required to help educate the hiree.
Didi Car Track	Injury through 3 rd party items and 3 rd part bodies / spectator's.	All shoes, glasses, jewellery, badges and alike MUST be removed before using this Inflatable track / ride on toys. Always ensure that the area surrounding the Activity is not overcrowded and free from objects.	3	3	9	Educate the hiree to follow the full terms and conditions as well as the terms of hire. Reinforce the policies shown in these documents. Show safety cartoons if required to help educate the hiree.
Didi Car Track	Danger of fire.	No smoking or barbecues near the Inflatable track at any time.	1	5	5	Educate the hiree to follow the full terms and conditions as well as the terms of hire. Reinforce the policies shown in these documents. Show safety cartoons if required to help educate the hiree.
Didi Car Track	Danger of falling from height.	Climbing, hanging or sitting on walls is DANGEROUS and must not be allowed at any time.	1	5	5	Educate the hiree to follow the full terms and conditions as well as the terms of hire. Reinforce the policies shown in these documents. Show safety cartoons if required to help educate the hiree.

Didi Car Track	Injury through 3 rd party and spectators.	Always ensure that the area surrounding the Inflatable track is not overcrowded.	2	3	6	Educate the hiree to ensure no one is located in the safe clear area through the hire and no hard objects are placed in accordance to the BS EN 14960:2006 guidelines for correct space around a castle during the hire period
Didi Car Track	Emergency.	In the event that someone is seriously injured, DO NOT move the individual, leave the inflatable track switched on and dial 999 immediately.	1	5	5	Assist first / emergency aiders and clearly log the incident in the book provided upon arrival after the incident.
Didi Car Track	Injury through lack of inflatable pressure or suffocation.	Do not allow anyone to be on the Inflatable track during inflation or deflation as this can be EXTREMELY DANGEROUS.	1	5	5	Regularly check the deflation zips to ensure they are in the closed position.
Didi Car Track	Injury through insecure anchorage.	Never use this unit without proper anchorage in place. The trained staff double check anchorage before leaving your site / party / event. Event peg point must be used.	1	5	5	If you are unsure about the anchorage, we advise you stop using the inflatable and call SoSoft Play immediately. We can help on the phone or make a returning site / party / event visit.
Didi Car Track	Overcrowding of Equipment.	Ensure that users have plenty of room in and around the inflatable track and matted area if required. Limit the age / height of users documented on the front of the inflatable / ride on toys. Ensure a responsible person is supervising at all times	2	5	10	Educate the hiree to follow the full terms and conditions as well as the terms of hire. Reinforce the policies shown in these documents. Show safety cartoons if required to help educate the hiree.
Didi Car Track	Sliding / skidding with equipment	Sliding / skidding on equipment is not allowed. It should be used in a controlled fashion only.	3	3	9	Educate the hiree to follow the full terms and conditions as well as the terms of hire. Reinforce the policies shown in these documents. Show safety cartoons if required to help educate the hiree.
Didi Car Track	Falling off the ride on toy	Ride on toys should be used in a controlled fashion only. It's recommended that safety helmets, pads and clothing is used, but is not provided from SoSoft Play. The hiree is responsible for providing safety clothing and equipment when using equipment.	3	3	9	Educate the hiree to follow the full terms and conditions as well as the terms of hire. Reinforce the policies shown in these documents. Show safety cartoons if required to help educate the hiree.

L=Likelihood S=Severity L*S= Risk 1=Low 5=High

Risk is worked out using numbers 1 - 5. The likelihood is given a number and this is multiplied by the number given to the severity of the risk.

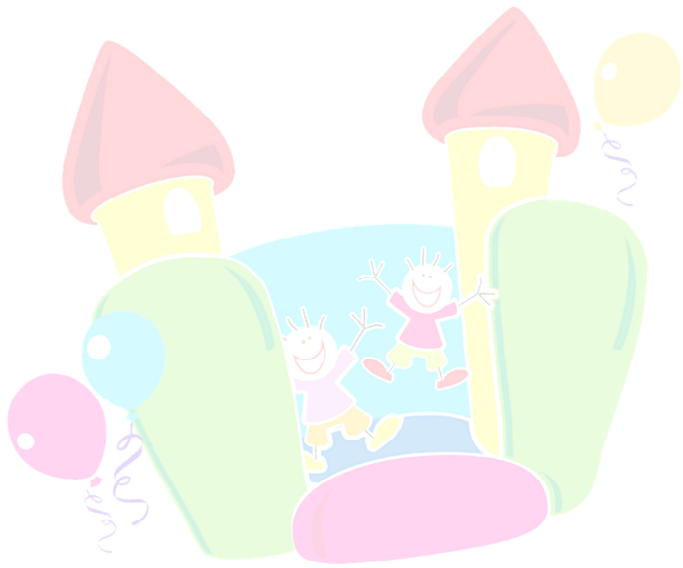
The result = the risk factor. This didi car track risk assessment covers basic practice, it also has the most common risks, preventions and outcomes. If a more detailed risk assessments is needed then it should be done in accordance with your event or company regulations and policy's. 25 is the worst possible outcome, any item reaching 25 would give serious cause for concern and we would not be able to erect the unit. Again it is recommended that clients undertake their own risk assessment to suit their requirements. This risk assessment doesn't not cover movement of inflatables and isn't site specific.

Definitions and Interpretation

>Responsible person – A person over 18 years of age whom is free from alcohol and drugs (prescription or not).

>trained operators can be supplied – Refusal of trained staff can be made and dry hire agreements can be implemented. This passes all liability to the hiree and users of the equipment. SoSoft Play can't be held liable accidents and injury caused during dry hire periods.

> **A fully trained operator / hiree** – A member of the SoSoft Play team or a trained hiree who has been shown the equipment and read / signed the terms of hire and agreed to the full terms and conditions.



SO SOFT
PLAY

BOUNCY CASTLE & SOFT PLAY HIRE